

**EXPO**  
**INOX**

**SW BLACK**



**SW**  
**BLACK**

**ACCIAIO INOX**  
**VERNICIATO NERO**

**MATTE BLACK PAINT**  
**STAINLESS STEEL**

# SW BLACK



## SISTEMA MONOPARETE SW BLACK

Il sistema **monoparete SW BLACK** è composto da elementi componibili rigidi, realizzati in acciaio inox AISI 316L di spessore minimo 0,4 mm e verniciati con vernice resistente fino a 550 °C, conformi agli standard previsti dalla marcatura CE secondo la normativa EN 1856-1. Gli elementi modulari hanno innesto classico a bicchiere maschio-femmina calibrato con guarnizione di tenuta a triplice labbro, da utilizzarsi solo con temperature non superiori a 200 °C e pressioni positive fino a 200 Pa, conforme alla normativa europea EN 14241-1, e giunzione meccanica con fascetta di sicurezza.

### Riferimento normativo e designazione

Marcatura prodotto secondo normativa europea CE EN 1856-1 / EN 1856-2.

T200 P1 W V2 L50040 O 60

T450 N1 W V2 L50040 G

T450 N1 W V2 L50040 G 800M

### Utilizzo

Condotti, canali da fumo, camini metallici, esalazioni aria asserviti a generatori di calore di tipo atmosferico, pressurizzato, ad aria soffiata, tradizionali o a condensazione, cappe cucina per uso industriale e domestico, stufe a pellet.

### Applicazione

Installazione interna.

### Diametri disponibili - mm

80 - 100

Guarnizione in silicone compresa e montata.

## SINGLE WALL SW BLACK SYSTEM

*Single wall SW BLACK system is composed by modular rigid elements, made of stainless steel AISI 316L, minium thickness of 0.4 mm, painted with paint up to 550 °C, according to the standards set out by the European CE mark, EN 1856-1. The modular elements have classic male-female junction calibrated, with triple seal lip gasket, for exclusive use with temperatures up to 200 °C and positive pressure up to 200 Pa, conforming to European standard EN 14241-1, and mechanical connection with locking clamp.*

### Normative references and designation

*Product marking according to the European standard CE EN 1856-1 / EN 1856-2.*

*T200 P1 W V2 L50040 O 60*

*T450 N1 W V2 L50040 G*

*T450 N1 W V2 L50040 G 800M*

### Utilizations

*Ducts, flue pipes, metal chimneys, air conduction subservient to atmospheric heat generators, pressurized, air blown, traditional or condensing, industrial and domestic kitchen hoods, pellet stoves.*

### Application

*Internal installation.*

### Available diameters - mm

*80 - 100*

*All the items are complete of silicone seal.*

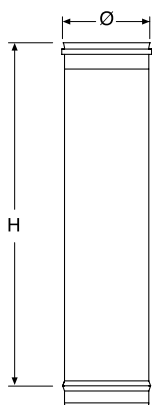
# MONOPARETE INOX NERO - SINGLE WALL BLACK INOX



## NL316EXTA20S...

Elemento lineare da 2 m.

Pipe 2 m.



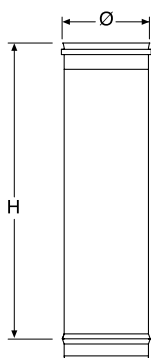
Ø	COD.	H
80	NL316EXTA20S08	1940
100	NL316EXTA20S10	1940



## NL316EXTA1S...

Elemento lineare da 1 m.

Pipe 1 m.



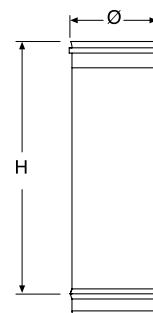
Ø	COD.	H
80	NL316EXTA1S08	940
100	NL316EXTA1S10	940



## NL316EXTA5S...

Elemento lineare da 0,50 m.

Pipe 0.50 m.



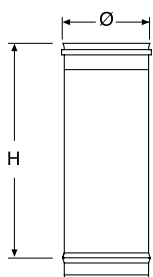
Ø	COD.	H
80	NL316EXTA5S08	440
100	NL316EXTA5S10	440



## NL316EXTA2S...

Elemento lineare da 0,25 m.

*Pipe 0.25 m.*



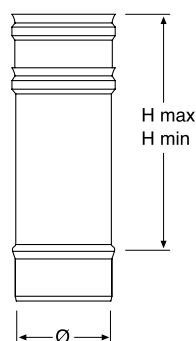
Ø	COD.	H
80	NL316EXTA2S08	190
100	NL316EXTA2S10	190



## NL316EXEPS4S...

Elemento telescopico composto da due elementi.

*Adjustable pipe composed of two elements.*



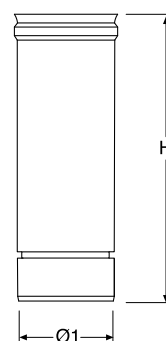
Ø	COD.	H min	H max
80	NL316EXEPS4S08	250	350
100	NL316EXEPS4S10	250	350



## NL316EXEPSI4S...

Elemento telescopico singolo.

*Adjustable pipe.*



Ø	Ø1	COD.	H
80	78	NL316EXEPSI4S08	250
100	98	NL316EXEPSI4S10	250

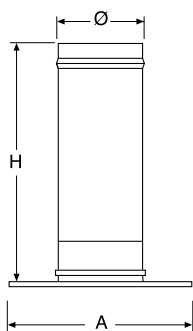
# MONOPARETE INOX NERO - SINGLE WALL BLACK INOX



**NLFLANGIATA2S...**

Tubo monoparete completo di rosone.

*Single wall pipe with ceiling hole cover.*



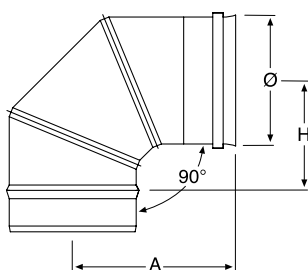
Ø	COD.	A	H
80	NLFLANGIATA2S08	180	190
100	NLFLANGIATA2S10	180	190



**NL316EXGA90X...**

Curva a 90°.

*Elbow 90°.*



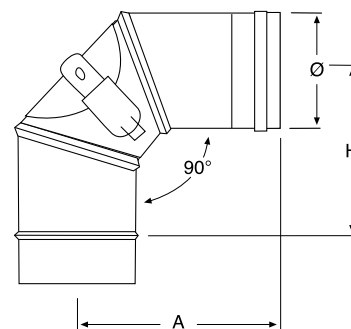
Ø	COD.	A	H
80	NL316EXGA90X08	130	80
100	NL316EXGA90X10	145	95



**NL316EXGA90SI...**

Curva a 90° a tre settori con ispezione.

*Elbow 90° with three sectors and inspection door.*



Ø	COD.	A	H
80	NL316EXGA90SI08	145	92
100	NL316EXGA90SI10	160	107

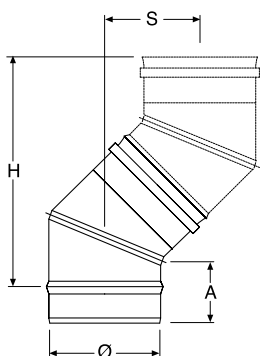
**SW BLACK**



**NL316EXGA45X...**

Curva a 45°.

Elbow 45°.



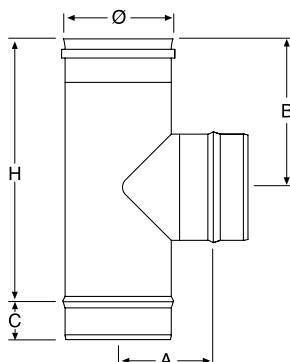
Ø	COD.	A	H	S
80	NL316EXGA45X08	65	202	83
100	NL316EXGA45X10	65	216	89



**NL316EXT69S...**

Raccordo a "T" 90° Ø 80 uscita 80 maschio.

Tee 90° Ø 80 outlet 80 male.



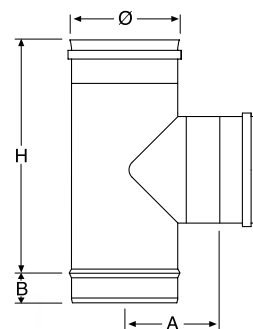
Ø	COD.	A	B	C	H
80	NL316EXT69S08	86	119	54	190
100	NL316EXT69S10	96	119	54	190



**NL316EXT6920008**

Raccordo a "T" 90° Ø 80 uscita 80 femmina.

Tee 90° Ø 80 outlet 80 female.



Ø	COD.	A	B	H
80	NL316EXT6920008	95	40	160

# Non disponibile  
Not available

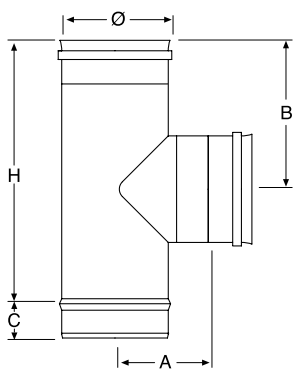
# MONOPARETE INOX NERO - SINGLE WALL BLACK INOX



**NL316EXT69SF10**

Raccordo a "T" 90° Ø 100 uscita 100 femmina.

*Tee 90° Ø 100 outlet 100 female.*



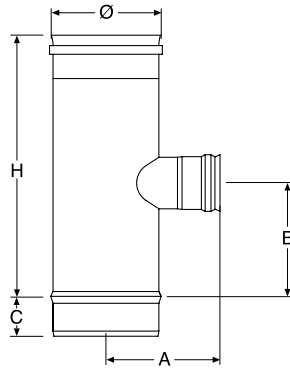
Ø	COD.	A	B	C	H
80	#	#	#	#	#
100	NL316EXT69SF10	145	123	54	190



**NL316EXT69SUF10**

Raccordo a "T" 90° Ø 100 uscita 80 femmina.

*Tee 90° Ø 100 outlet 80 female.*



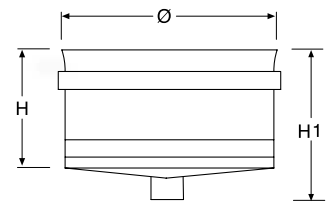
Ø	COD.	A	B	C	H
80	#	#	#	#	#
100	NL316EXT69SUF10	145	123	54	190



**NL316EXSCARSS...**

Scarico condensa con tappo.

*Tee cap with condense drain and cap.*



Ø	COD.	H	H1
80	NL316EXSCARSS08	55	85
100	NL316EXSCARSS10	60	90

SW BLACK

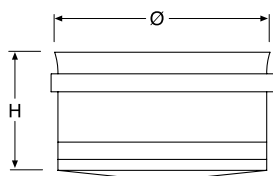
# Non disponibile  
Not available



**NL316EXTCSM...**

Tappo cieco senza maniglia.

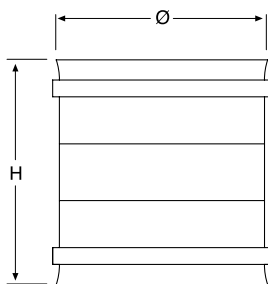
*Tee cap without handle.*



**NL316EXFFA...**

Manicotto femmina - femmina.

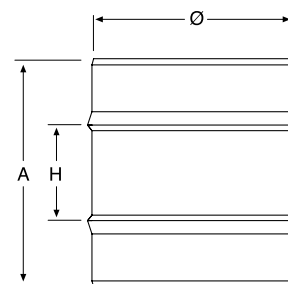
*Double female adaptor.*



**NL316EXMMA...**

Manicotto maschio - maschio.

*Double male adaptor.*



Ø	COD.	H
80	NL316EXTCSM08	55
100	NL316EXTCSM10	60

Ø	COD.	H
80	NL316EXFFA08	133
100	NL316EXFFA10	133

Ø	COD.	A	H
80	NL316EXMMA08	143	30
100	NL316EXMMA10	143	30



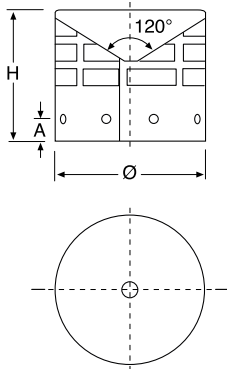
# MONOPARETE INOX NERO - SINGLE WALL BLACK INOX



**NL316EXSCAFUM...**

Griglia terminale.

*Terminal with mesh.*



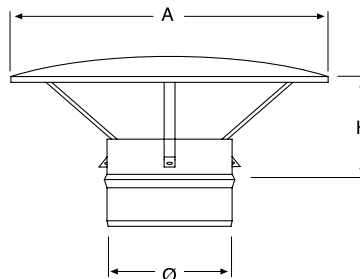
Ø	COD.	A	H
80	NL316EXSCAFUM08	12	70
100	NL316EXSCAFUM10	12	70



**NL316EXCAIS...**

Cappello cinese.

*Rain cap.*



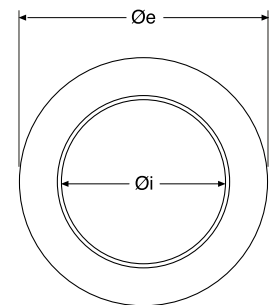
Ø	COD.	A	H
80	NL316EXCAIS08	180	130
100	NL316EXCAIS10	230	130



**NL316EXROSAS...**

Rosone copriforo in silicone.

*Silicon ceiling hole cover.*



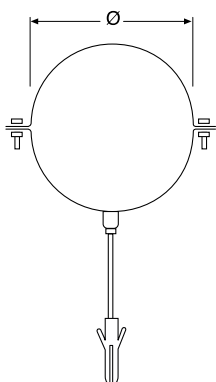
Øi	Øe	COD.
80	135	NL316EXROSAS08
100	165	NL316EXROSAS10



**NL316BCCT...R**

Collare a muro rinforzato con tassello.

*Reinforced wall bracket with anchor bolt.*



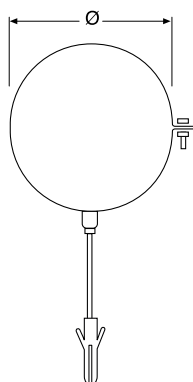
Ø	COD.
80	NL316BCCT08R
100	NL316BCCT10R



**NL316EXCOLSCT...**

Collare a muro con tassello.

*Wall bracket with anchor bolt.*



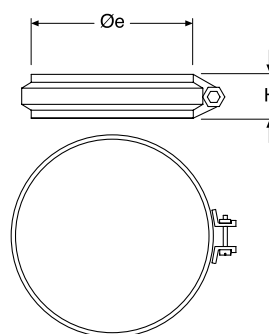
Ø	COD.
80	NL316EXCOLSCT08
100	NL316EXCOLSCT10



**NL316BFACSS...**

Fascetta di sicurezza.

*Locking band.*



Ø	COD.	H
80	NL316BFACSS08	20
100	NL316BFACSS10	20

# MONOPARETE INOX NERO - SINGLE WALL BLACK INOX

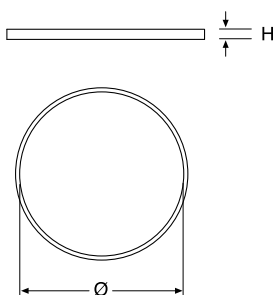
SW BLACK



## L316EX3LGN...

Guarnizione di tenuta in silicone nero.

*Silicone black seal.*



Ø	COD.	H
80	L316EX3LGN08	10
100	L316EX3LGN10	10



## SPRAY

Bomboletta spray per sistema SW Black.

*Spray paint for SW Black system.*

COD.
SPRAY



## KIT SW BLACK Ø 80

Kit SW Black Ø 80 mm.

*Kit SW Black Ø 80 mm.*

Contiene / Contains

1	Tubo da 1 m <i>Pipe 1 m</i>
1	Tubo da 0,50 m <i>Pipe 0.50 m</i>
1	Raccordo a "T" 90° con tappo <i>90° tee with tee cap</i>
1	Curva a 90° <i>Elbow 90°</i>
1	Collare con tassello <i>Wall bracket with anchor bolt</i>
1	Rosone in silicone <i>Silicone ceiling hole cover</i>

Ø	COD.
80	NL316EXKIT08



## LUBGN

Lubrificante per guarnizione.

*Lubricant for seal.*

COD.
LUBGN



## SILICONEAT

Silicone rosso alta temperatura -  
Resistente 280 °C.

*High temperature red silicone -  
280 °C resistant.*

COD.
SILICONEAT



## SILICONEREF

Silicone nero alta temperatura -  
Resistente 1000 °C

*High temperature black silicone -  
1000 °C resistant.*

COD.
SILICONEREF



## BOX SW BLACK Ø 80

Box SW Black Ø 80 mm

*SW Black box Ø 80 mm*

Contiene / *Contains*

<b>6</b>	Tubi 2 m <i>Pipes 2 m</i>
<b>12</b>	Tubi 1 m <i>Pipes 1 m</i>
<b>6</b>	Tubi 0,50 m <i>Pipes 0.50 m</i>
<b>6</b>	Tubi 0,25 m <i>Pipes 0.25 m</i>
<b>12</b>	Curve a 90° <i>90° elbows</i>
<b>12</b>	Curve a 45° <i>45° elbows</i>
<b>12</b>	T a 90° con tappo <i>90° tees with tee cap</i>
<b>24</b>	Collari a muro <i>Wall brackets</i>

**COD.**

KIT12PROBLACK