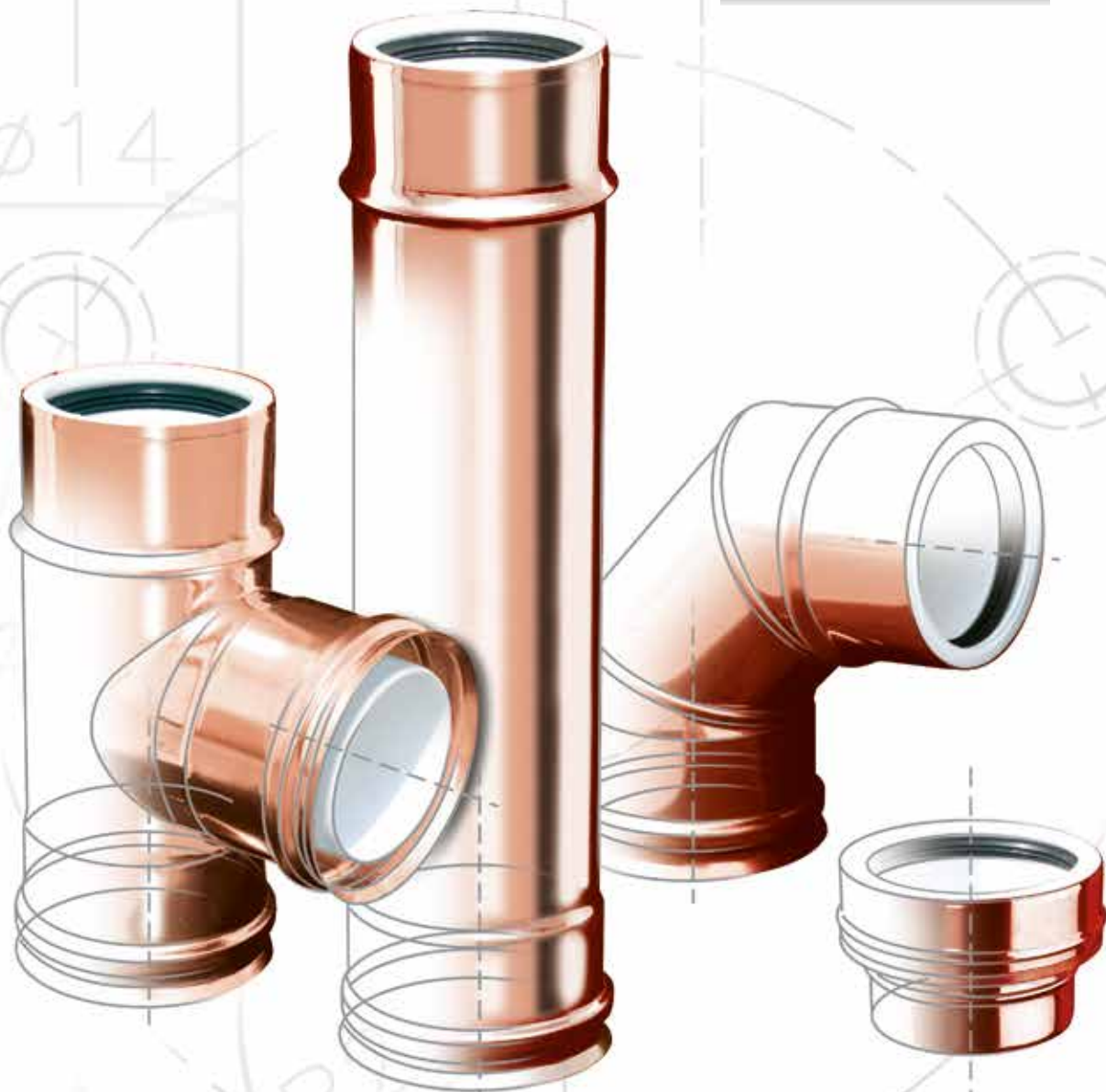


EXPO
INOX

COPPERPLAST



COPPERPLAST

**DOPPIA PARETE
POLIPROPILENE
RAMATO**

**POLYPROPYLENE
KOPPER
DOUBLE WALL**

COPPERPLAST



SISTEMA DOPPIA PARETE PPs-RAMATO COPPERPLAST

Il sistema **doppia parete PPs-ramato COPPERPLAST** è composto da elementi componibili rigidi, realizzati in polipropilene arricchito di spessore minimo 1,5 mm e protetti da una parete esterna in acciaio inox effetto ramato, conformi agli standard previsti dalla marcatura CE secondo la normativa EN 14471. Gli elementi modulari hanno innesto classico a bicchiere maschio-femmina calibrato con guarnizione di tenuta a triplice labbro, conforme alla normativa europea EN 14241-1. Il sistema è adatto a ricevere i fumi con temperatura massima di esercizio fino a 120 °C e pressione massima 200 Pa.

Riferimento normativo e designazione

Marcatura prodotto secondo normativa europea CE 0476 EN 14471.

T120 P1 W 2 O00 LE E UO

T120 H1 W 2 O00 LE E UO

Utilizzo

Sistema fumario e canale da fumo plastico asserviti a generatori a condensazione, cappe cucina per uso domestico.

Applicazione

Installazione interna ed esterna.

Diametri disponibili - mm

80/100 - 100/120

Guarnizione in EPDM compresa e montata.

DOUBLE WALL PPs-KOPPER COPPERPLAST SYSTEM

Double wall PPs-kopper COPPERPLAST system is composed by modular rigid elements, made of polypropylene, minimum thickness of 1.5 mm and protected by an external wall in stainless steel kopper effect, according to the standards set out by the European CE mark, EN 14471. The modular elements have classic male-female junction calibrated with triple seal lip gasket, conforming to European standard EN 14241-1.

The system is suitable to receive flue gases with a maximum operating temperature of 120 °C and maximum pressure of 200 Pa.

Normative references and designations

Product marking according to the European standard CE 0476 EN 14471.

T120 P1 W 2 O00 LE E UO

T120 H1 W 2 O00 LE E UO

Utilizations

Flue systems and flue duct subservient to condensation generators, domestic kitchen hoods.

Application

Internal and external installation.

Available diameters - mm

80/100 - 100/120

All the items are complete of EPDM seal.

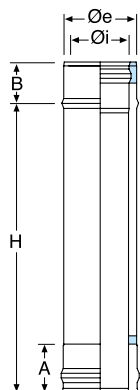
POLIPROPILENE/RAMATO - POLYPROPYLENE/KOPPER



CPIPL48B...

Elemento lineare da 1 m.

Pipe 1 m.



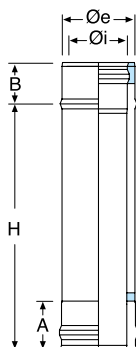
Øi	Øe	COD.	A	B	H
80	100	CPIPL48B08	65	54	940
100	120	CPIPL48B10	65	54	940



CPIPL48C...

Elemento lineare da 0,50 m.

Pipe 0.50 m.



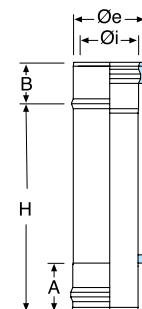
Øi	Øe	COD.	A	B	H
80	100	CPIPL48C08	65	54	440
100	120	CPIPL48C10	65	54	440



CPIPL48D...

Elemento lineare da 0,25 m.

Pipe 0.25 m.



Øi	Øe	COD.	A	B	H
80	100	CPIPL48D08	65	54	190
100	120	CPIPL48D10	65	54	190

COPPERPLAST



CPIPL49A...

Curva a 87°.

Elbow 87°.



CPIPL49B...

Curva a 45°.

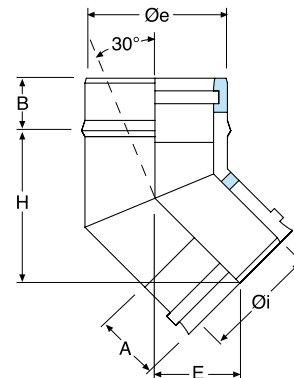
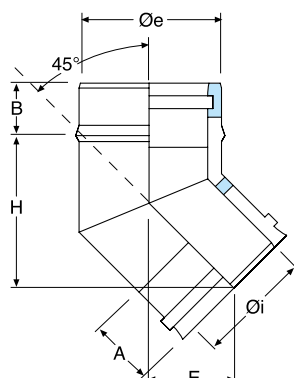
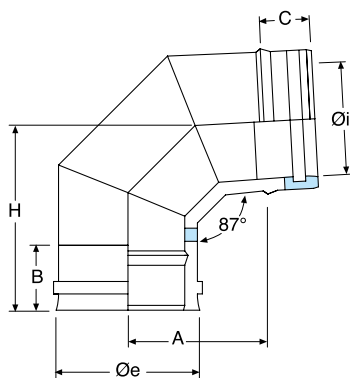
Elbow 45°.



CPIPL49C...

Curva a 30°.

Elbow 30°.



Øi	Øe	COD.	A	B	C	H
80	100	CPIPL49A08	91	65	54	154
100	120	CPIPL49A10	96	65	54	154

Øi	Øe	COD.	A	B	E	H
80	100	CPIPL49B08	65	54	35	95
100	120	CPIPL49B10	65	54	38	100

Øi	Øe	COD.	A	B	E	H
80	100	CPIPL49C08	65	54	48	139
100	120	CPIPL49C10	65	54	48	139

POLIPROPILENE/RAMATO - POLYPROPYLENE/KOPPER



CPIPL53A...

Elemento per prelievo fumi.

Fumes test section with threaded sleeve.



CPIPL55A...

Raccordo a "T" 87°.

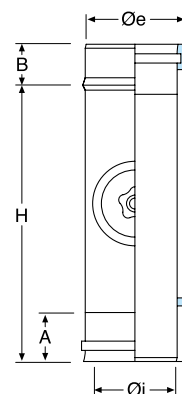
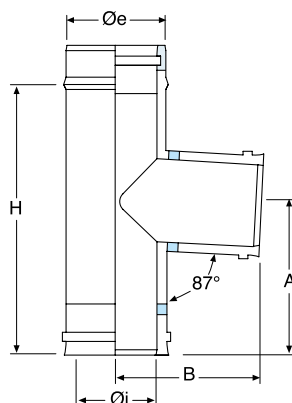
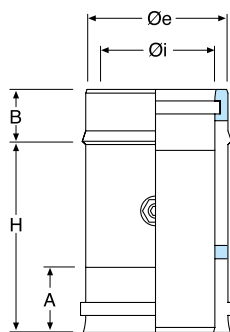
87° tee.



CPIPL50A...

Elemento con portello tondo per ispezione.

Element with round test point.



Øi	Øe	COD.	A	B	H
80	100	CPIPL53A08	65	54	190
100	120	CPIPL53A10	65	54	190

Øi	Øe	COD.	A	B	H
80	100	CPIPL55A08	120	130	190
100	120	CPIPL55A10	160	140	270

Øi	Øe	COD.	A	B	H
80	100	CPIPL50A08	65	54	190
100	120	CPIPL50A10	65	54	270

COPPERPLAST



CPIPL70A...

Scarico condensa.

Tee cap with condense drain.



CPIPL71A...

Tappo cieco.

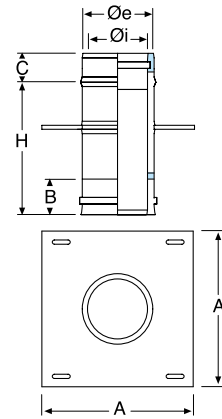
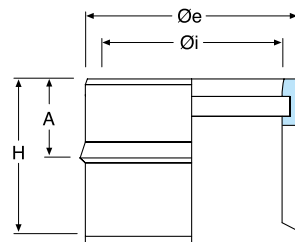
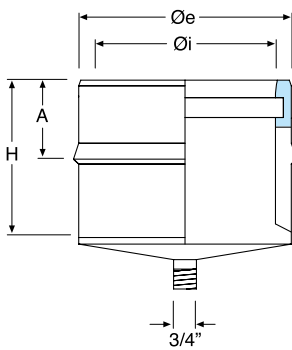
Tee cap.



CPIPL69A...

Piastra intermedia.

Intermediate anchor plate.



Øi	Øe	COD.	A	H
80	100	CPIPL70A08	54	65
100	120	CPIPL70A10	54	65

Øi	Øe	COD.	A	H
80	100	CPIPL71A08	54	65
100	120	CPIPL71A10	54	65

Øi	Øe	COD.	A	B	C	H
80	100	CPIPL69A08	200	65	54	190
100	120	CPIPL69A10	240	65	54	190

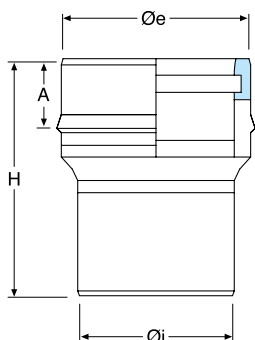
POLIPROPILENE/RAMATO - POLYPROPYLENE/KOPPER



CPIPL82A...

Raccordo caldaia.

Boiler adaptor.



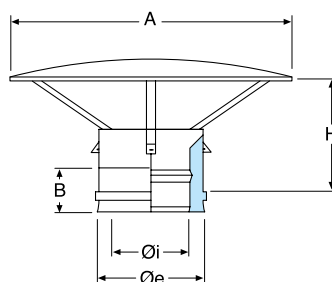
Øi	Øe	COD.	A	H
80	100	CPIPL82A08	54	250
100	120	CPIPL82A10	54	250



ACPEXCCDPC...

Cappello cinese.

Rain cap.



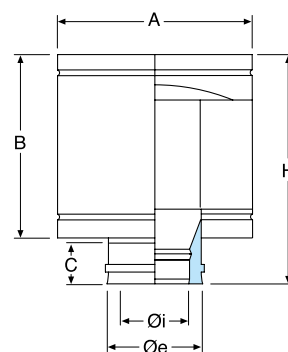
Øi	Øe	COD.	A	B	H
80	100	ACPEXCCDPC08	230	65	205
100	120	ACPEXCCDPC10	289	65	205



ACPEXTADPC...

Terminale anti intemperie.

Anti draught terminal.



Øi	Øe	COD.	A	B	C	H
80	100	ACPEXTADPC08	200	185	65	240
100	120	ACPEXTADPC10	250	185	65	240

COPPERPLAST



ACPEXTTCDPC...

Terminale tronco conico.

Venturi cone terminal.



EXPL3GN...

Guarnizione di tenuta in EPDM nero.

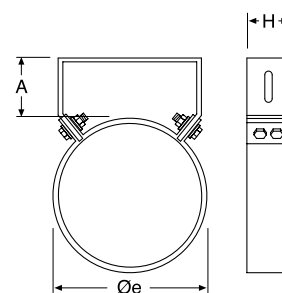
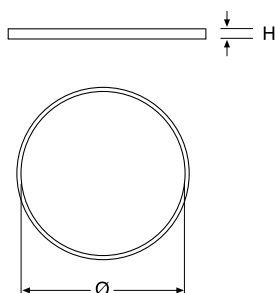
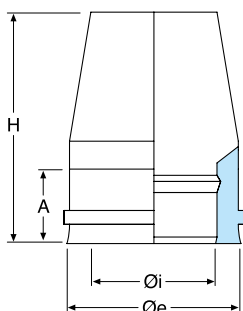
EPDM black seal.



CPL316COLSS...

Collare a muro.

Wall bracket.



Øi	Øe	COD.	A	H
80	100	ACPEXTTCDPC08	65	235
100	120	ACPEXTTCDPC10	65	235

Ø	COD.	H
80	EXPL3GN08	10
100	EXPL3GN10	10

Øe	COD.	A	H
100	CPL316COLSS10	50	40
120	CPL316COLSS12	50	40

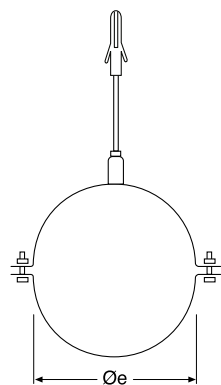
POLIPROPILENE/RAMATO - POLYPROPYLENE/KOPPER



CPL316CCT...

Collare a muro con tassello.

Wall bracket with anchor bolt.



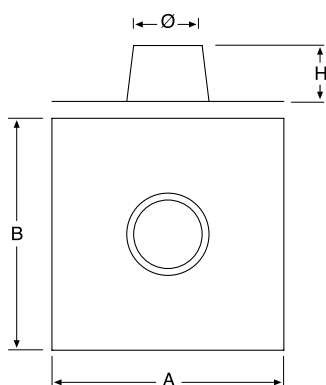
Øe	COD.
100	CPL316CCT10
120	CPL316CCT12



CPL316AFPPS...

Faldale piano con base in alluminio.

Flat flashing with aluminum base.



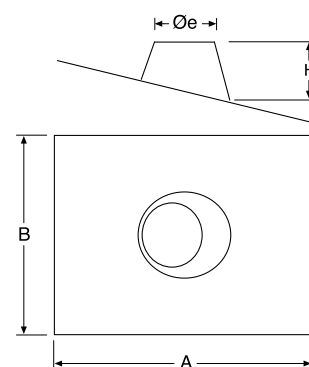
Øi	Øe	COD.	A	B	H
80	100	CPL316AFPPS10	450	550	120
100	120	CPL316AFPPS12	550	650	130



CPL316FPS5...

Faldale regolabile da 5° a 30° con base in alluminio.

Adjustable flashing from 5° to 30° with aluminum base.



Øi	Øe	COD.	A	B	H
80	100	CPL316FPS510	750	450	120
100	120	CPL316FPS512	750	450	130

COPPERPLAST



CPL316CS...

Coppia di supporti per piastra.

Cantilever brackets (pair).



CPL316FAPS2S...

Fascetta anti intemperie.

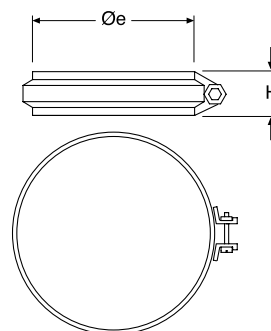
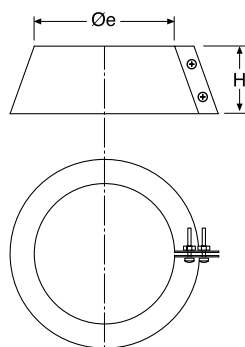
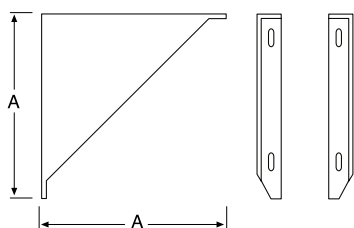
Storm collar.



CPL316FACSS...

Fascetta di sicurezza.

Locking band.



Øi	Øe	COD.	A
80	100	CPL316CS10	200
100	120	CPL316CS12	220

Øi	Øe	COD.	H
80	100	CPL316FAPS2S10	100
100	120	CPL316FAPS2S12	100

Øe	COD.	H
100	CPL316FACSS10	20
120	CPL316FACSS12	20



LUBGN

Lubrificante per guarnizione.

Lubricant for seal.

COD.

LUBGN