

EXPO
INOX

PLASTINOX



PLASTINOX

DOPPIA PARETE
POLIPROPILENE
INOX

POLYPROPYLENE
INOX
DOUBLE WALL

$\varnothing 34$

$\varnothing 38.5_{-0.1}^0$

$\varnothing 42.4$

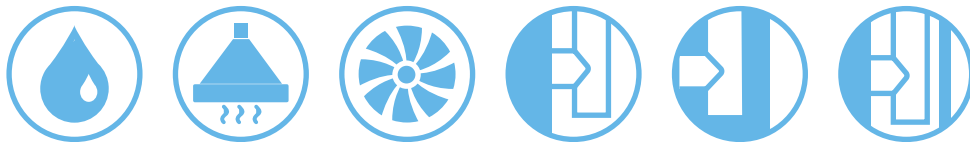
7.6

20

3.2
TURNED

9.2

PLASTINOX



SISTEMA DOPPIA PARETE PPs-INOX PLASTINOX

Il sistema **doppia parete PPs-inox PLASTINOX** è composto da elementi componibili rigidi, realizzati in polipropilene arricchito di spessore minimo 1,5 mm e protetti da una parete esterna in acciaio inox AISI 304 con finitura lucida BA di spessore 0,4 mm, conformi agli standard previsti dalla marcatura CE secondo la normativa EN 14471. Gli elementi modulari hanno innesto classico a bicchiere maschio-femmina calibrato con guarnizione di tenuta a triplice labbro, conforme alla normativa europea EN 14241-1.

Il sistema è adatto a ricevere i fumi con temperatura massima di esercizio fino a 120 °C e pressione massima 200 Pa.

Riferimento normativo e designazione

Marcatura prodotto secondo normativa europea CE 0476 EN 14471.

T120 P1 W 2 O00 LE E UO

T120 H1 W 2 O00 LE E UO

Utilizzo

Sistema fumario e canale da fumo plastico asserviti a generatori a condensazione, cappe cucina per uso domestico.

Applicazione

Installazione interna ed esterna.

Diametri disponibili - mm

60/80 (A RICHIESTA) - 80/100 - 100/120

Guarnizione in EPDM compresa e montata.

DOUBLE WALL PPs-INOX PLASTINOX SYSTEM

Double wall PPs-inox PLASTINOX system is composed by modular rigid elements, made of polypropylene, minimum thickness of 1.5 mm and protected by an external wall in stainless steel AISI 304 with finish polished BA, thickness 0.4 mm, according to the standards set out by the European CE mark, EN 14471. The modular elements have classic male-female junction calibrated with triple seal lip gasket, conforming to European standard EN 14241-1.

The system is suitable to receive flue gases with a maximum operating temperature of 120 °C and maximum pressure of 200 Pa.

Normative references and designations

Product marking according to the European standard CE 0476 EN 14471.

T120 P1 W 2 O00 LE E UO

T120 H1 W 2 O00 LE E UO

Utilizations

Flue systems and flue duct subservient to condensation generators, domestic kitchen hoods.

Application

Internal and external installation.

Available diameters - mm

60/80 (ON REQUEST) - 80/100 - 100/120

All the items are complete of EPDM seal.

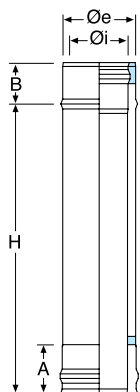
POLIPROPILENE/INOX - POLYPROPYLENE/INOX



IPL48A...

Elemento lineare da 2 m.

Pipe 2 m.



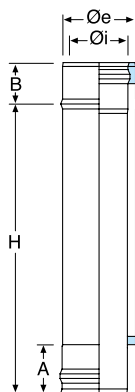
Øi	Øe	COD.	A	B	H
60	80	IPL48A06	65	54	1940
80	100	IPL48A08	65	54	1940



IPL48B...

Elemento lineare da 1 m.

Pipe 1 m.



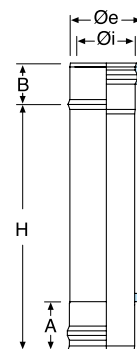
Øi	Øe	COD.	A	B	H
60	80	IPL48B06	65	54	940
80	100	IPL48B08	65	54	940
100	120	IPL48B10	65	54	940



IPL48C...

Elemento lineare da 0,50 m.

Pipe 0.50 m.



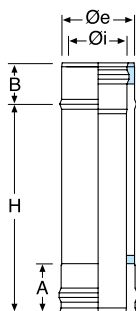
Øi	Øe	COD.	A	B	H
60	80	IPL48C06	65	54	440
80	100	IPL48C08	65	54	440
100	120	IPL48C10	65	54	440



IPL48D...

Elemento lineare da 0,25 m.

Pipe 0.25 m.



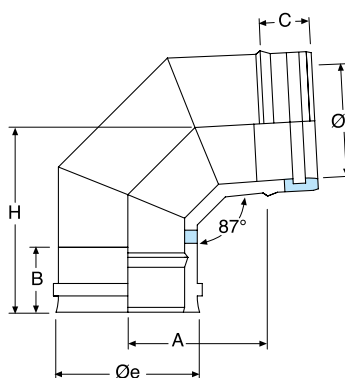
Øi	Øe	COD.	A	B	H
60	80	IPL48D06	65	54	190
80	100	IPL48D08	65	54	190
100	120	IPL48D10	65	54	190



IPL49A...

Curva a 87°.

Elbow 87°.



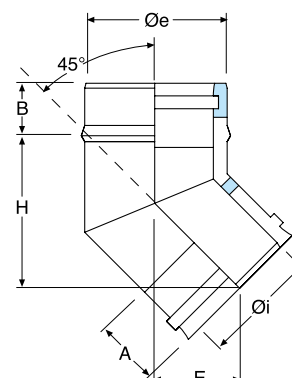
Øi	Øe	COD.	A	B	C	H
60	80	IPL49A06	81	65	54	147
80	100	IPL49A08	86	65	54	154
100	120	IPL49A10	96	65	54	154



IPL49B...

Curva a 45°.

Elbow 45°.



Øi	Øe	COD.	A	B	E	H
60	80	IPL49B06	65	54	33	90
80	100	IPL49B08	65	54	35	95
100	120	IPL49B10	65	54	38	100

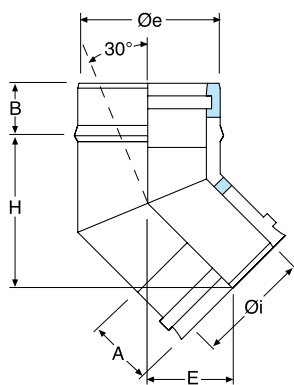
POLIPROPILENE/INOX - POLYPROPYLENE/INOX



IPL49C...

Curva a 30°.

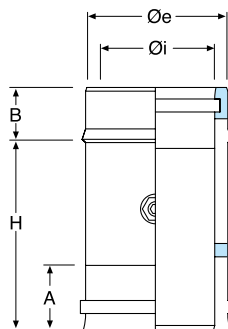
Elbow 30°.



IPL53A...

Elemento per prelievo fumi.

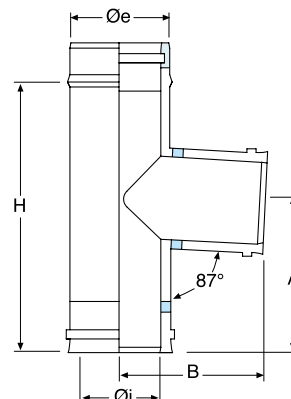
Fumes test section with threaded sleeve.



IPL55A...

Raccordo a "T" 87°.

87° tee.



Øi	Øe	COD.	A	B	E	H
60	80	IPL49C06	65	54	48	139
80	100	IPL49C08	65	54	48	139
100	120	IPL49C10	65	54	48	139

Øi	Øe	COD.	A	B	H
60	80	IPL53A06	65	54	190
80	100	IPL53A08	65	54	190
100	120	IPL53A10	65	54	190

Øi	Øe	COD.	A	B	H
60	80	IPL55A06	120	120	190
80	100	IPL55A08	120	130	190
100	120	IPL55A10	160	140	270



IPL50A...

Elemento con portello tondo per ispezione.

Element with round test point.



IPL70A...

Scarico condensa.

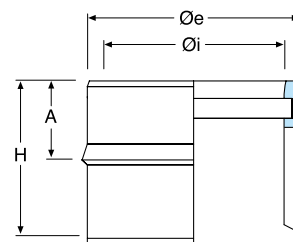
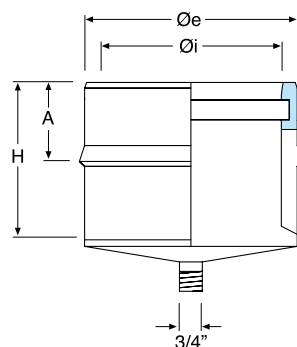
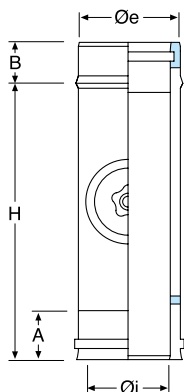
Tee cap with condense drain.



IPL71A...

Tappo cieco.

Tee cap.



Øi	Øe	COD.	A	B	H
60	80	IPL50A06	65	54	190
80	100	IPL50A08	65	54	190
100	120	IPL50A10	65	54	270

Øi	Øe	COD.	A	H
60	80	IPL70A06	54	65
80	100	IPL70A08	54	65
100	120	IPL70A10	54	65

Øi	Øe	COD.	A	H
60	80	IPL71A06	54	65
80	100	IPL71A08	54	65
100	120	IPL71A10	54	65

POLIPROPILENE/INOX - POLYPROPYLENE/INOX



IPL69A...

Piastra intermedia.

Intermediate anchor plate.



IPL82A...

Raccordo caldaia.

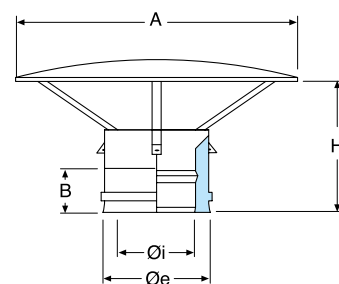
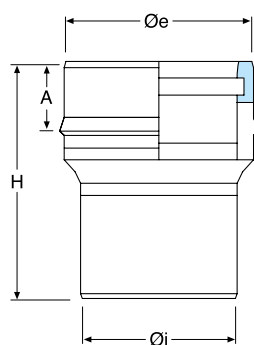
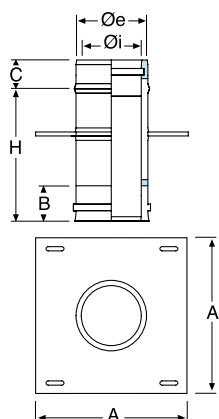
Boiler adaptor.



AEXCCDPC...

Cappello cinese.

Rain cap.



Øi	Øe	COD.	A	B	C	H
60	80	IPL69A06	200	65	54	190
80	100	IPL69A08	200	65	54	190
100	120	IPL69A10	220	65	54	190

Øi	Øe	COD.	A	H
60	80	IPL82A06	54	250
80	100	IPL82A08	54	250
100	120	IPL82A10	54	250

Øi	Øe	COD.	A	B	H
60	80	AEXCCDPC06	180	65	185
80	100	AEXCCDPC08	230	65	205
100	120	AEXCCDPC10	289	65	205



AEXTADPC...

Terminale anti intemperie.

Anti draught terminal.



AEXTTCDCPC...

Terminale tronco conico.

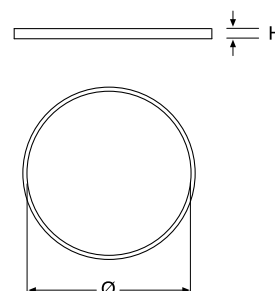
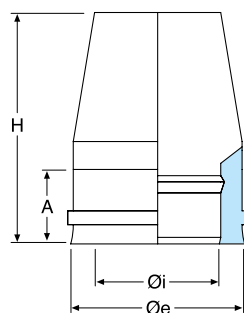
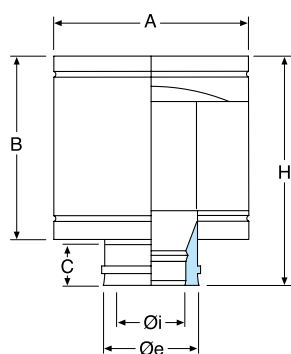
Venturi cone terminal.



EXPL3GN...

Guarnizione di tenuta in EPDM nero.

EPDM black seal.



Øi	Øe	COD.	A	B	C	H
60	80	AEXTADPC06	200	165	65	240
80	100	AEXTADPC08	200	185	65	240
100	120	AEXTADPC10	250	185	65	240

Øi	Øe	COD.	A	H
60	80	AEXTTCDCPC06	65	235
80	100	AEXTTCDCPC08	65	235
100	120	AEXTTCDCPC10	65	235

Ø	COD.	H
60	EXPL3GN06	10
80	EXPL3GN08	10
100	EXPL3GN10	10

POLIPROPILENE/INOX - POLYPROPYLENE/INOX



L316EXBM...

Bicchiere di montaggio

Assembly element.



L316EXCCT...

Collare a muro con tassello.

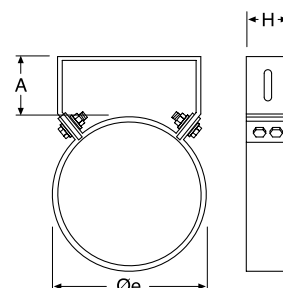
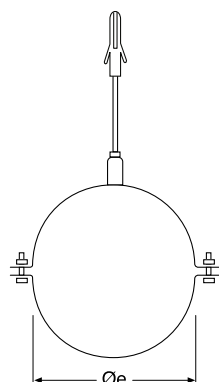
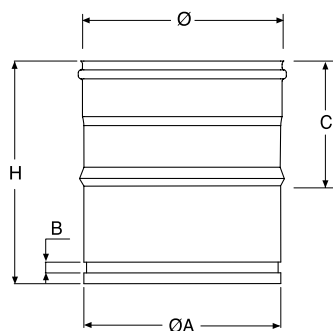
Wall bracket with anchor bolt.



L316EXCOLSS...

Collare a muro.

Wall bracket.



Øe	COD.	ØA	B	C	H
80	L316EXBM08	78	10	80	135
100	L316EXBM10	98	10	80	135
120	L316EXBM12	118	10	80	135

Øe	COD.
80	L316EXCCT08
100	L316EXCCT10
120	L316EXCCT12

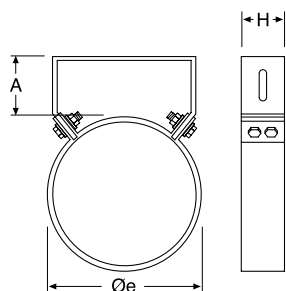
Øe	COD.	A	H
80	L316EXCOLSS08	50	40
100	L316EXCOLSS10	50	40
120	L316EXCOLSS12	50	40



BFL316CREG...

Collare a muro regolabile da 50 a 100 mm.

Wall bracket adjustable from 50 to 100 mm.



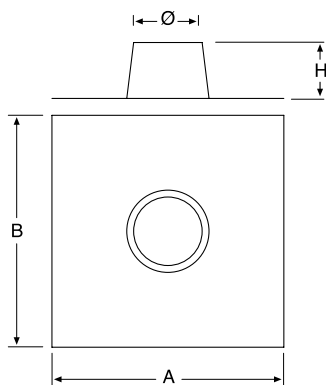
\varnothing_e	COD.	A	H
80	BFL316CREG08	50-100	40
100	BFL316CREG10	50-100	40
120	BFL316CREG12	50-100	40



BFL304AFPPSS...

Faldale piano con base in alluminio.

Flat flashing with aluminum base.



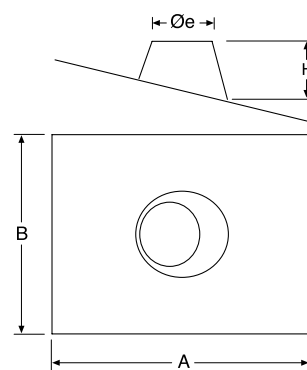
\varnothing_i	\varnothing_e	COD.	A	B	H
60	80	BFL304AFPPSS08	450	550	120
80	100	BFL304AFPPSS10	450	550	120
100	120	BFL304AFPPSS12	550	650	130



BFL304AFPS5S...

Faldale regolabile da 5° a 30° con base in alluminio.

Adjustable flashing from 5° to 30° with aluminum base.



\varnothing_i	\varnothing_e	COD.	A	B	H
60	80	BFL304AFPS5S08	750	450	120
80	100	BFL304AFPS5S10	750	450	120
100	120	BFL304AFPS5S12	750	450	130

POLIPROPILENE/INOX - POLYPROPYLENE/INOX



L316EXCS...

Coppia di supporti per piastra.

Cantilever brackets (pair).



L316EXFAPS2S...

Fascetta anti intemperie.

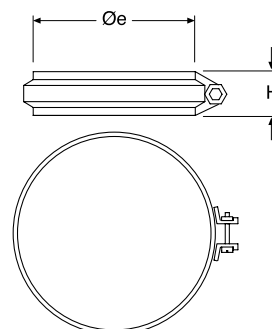
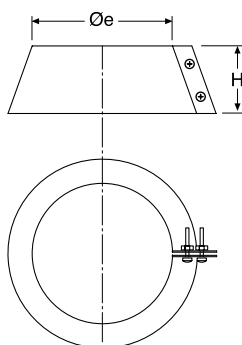
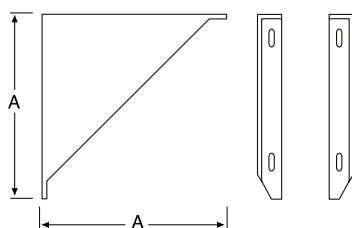
Storm collar.



L316EXFACSS...

Fascetta di sicurezza.

Locking band.



Øi	Øe	COD.	A
60	80	L316EXCS08	180
80	100	L316EXCS10	200
100	120	L316EXCS12	220

Øi	Øe	COD.	H
60	80	L316EXFAPS2S08	100
80	100	L316EXFAPS2S10	100
100	120	L316EXFAPS2S12	100

Øe	COD.	H
80	L316EXFACSS08	20
100	L316EXFACSS10	20
120	L316EXFACSS12	20



LUBGN

Lubrificante per guarnizione.

Lubricant for seal.

COD.
LUBGN

